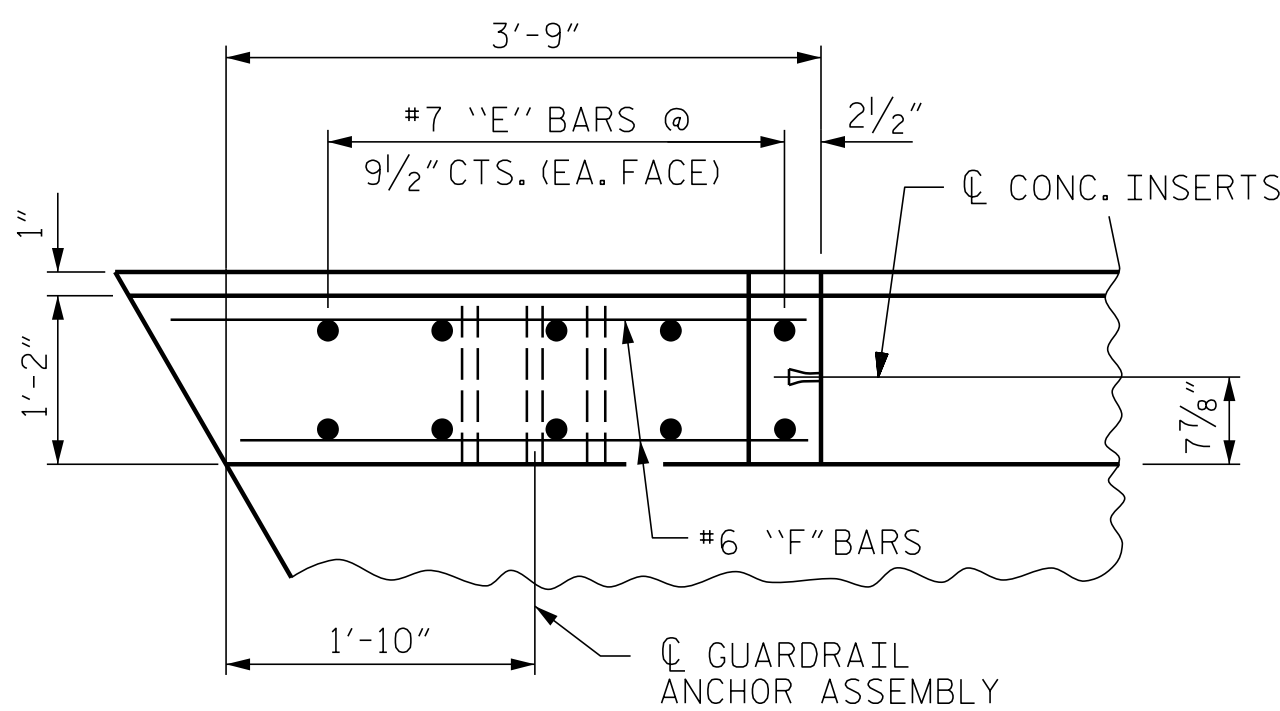
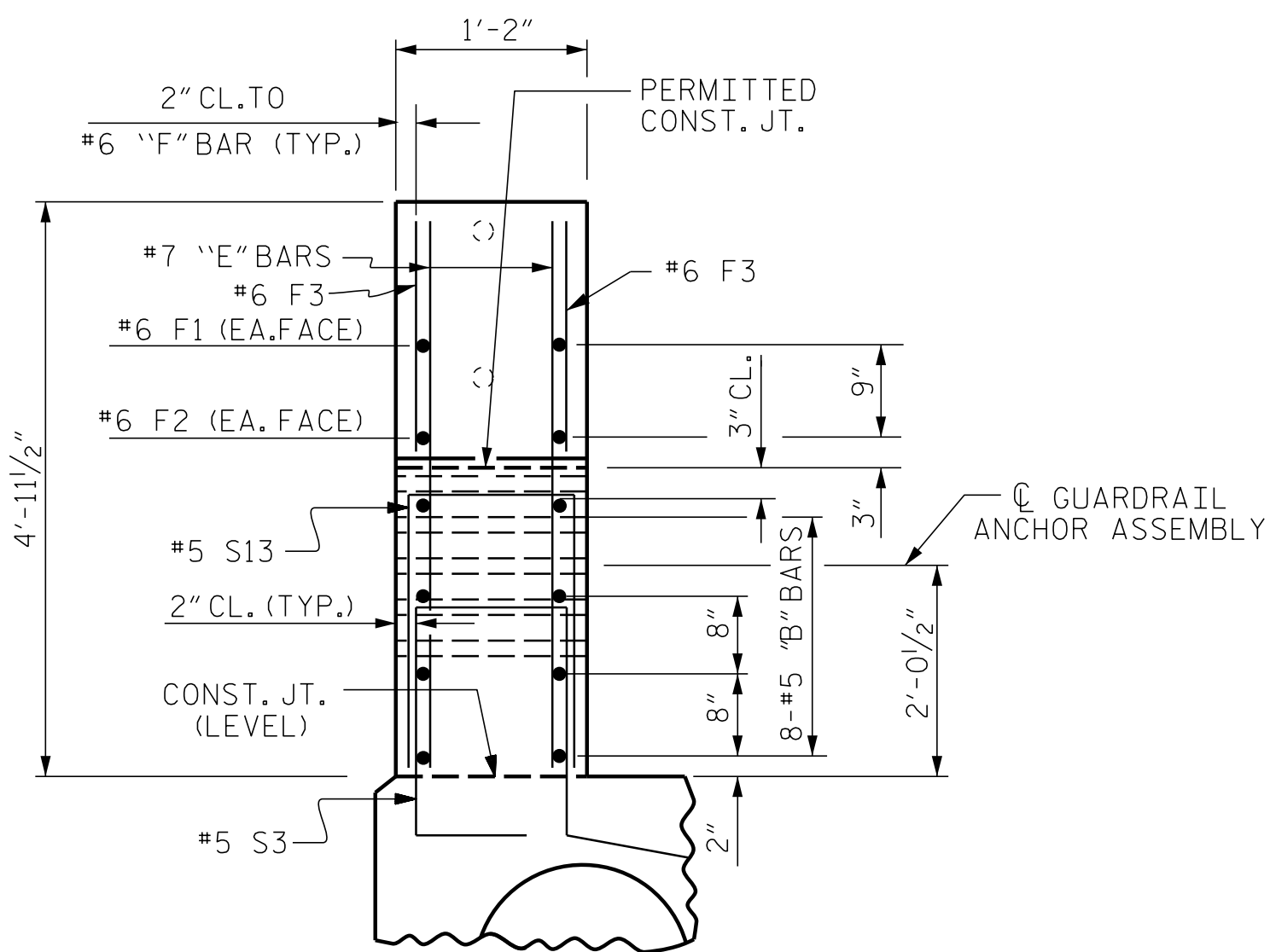


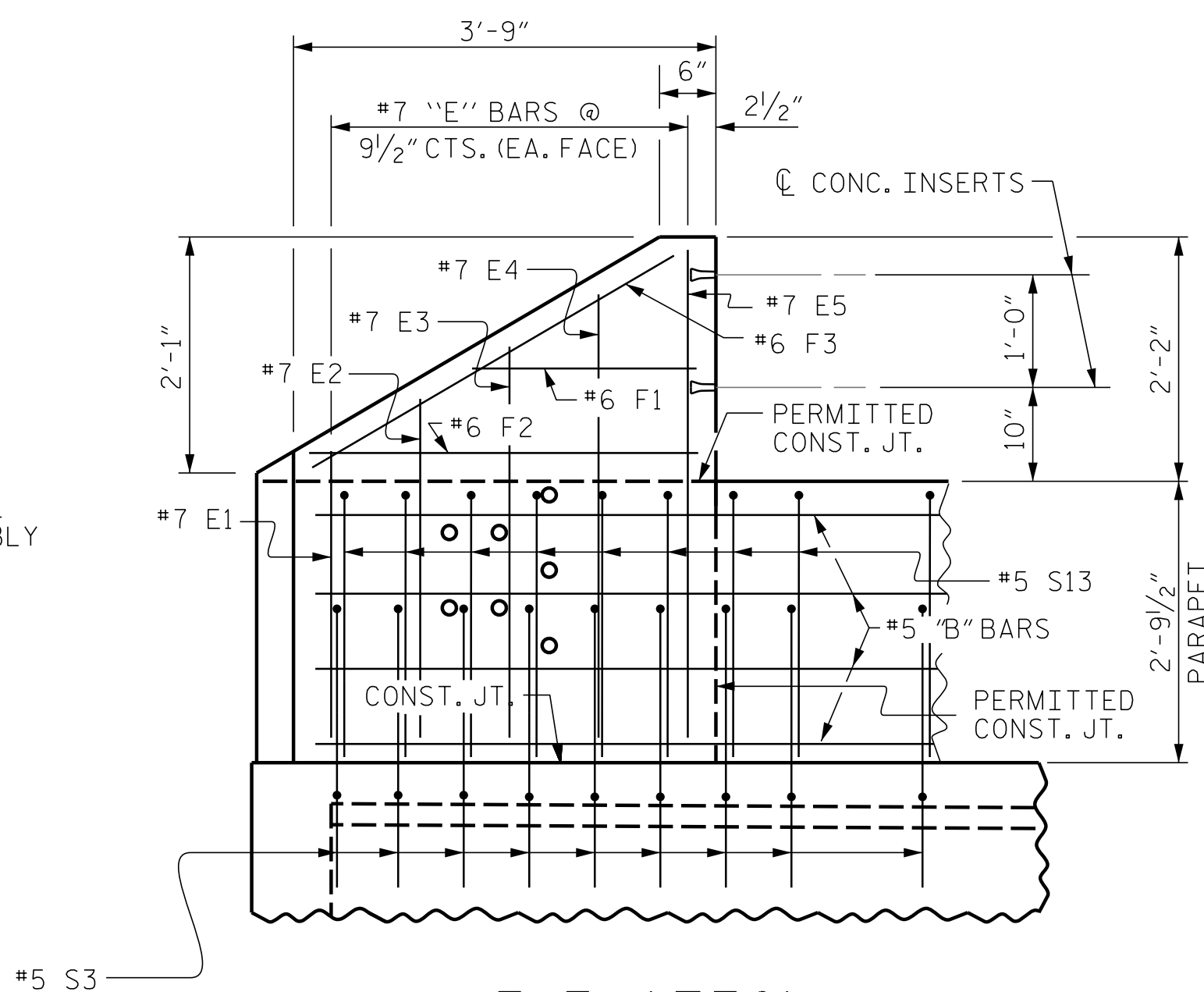
PLAN OF PARAPET



PLAN OF END POST



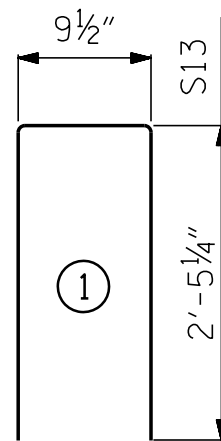
END VIEW



ELEVATION

PARAPET AND END POST FOR TWO BAR RAIL

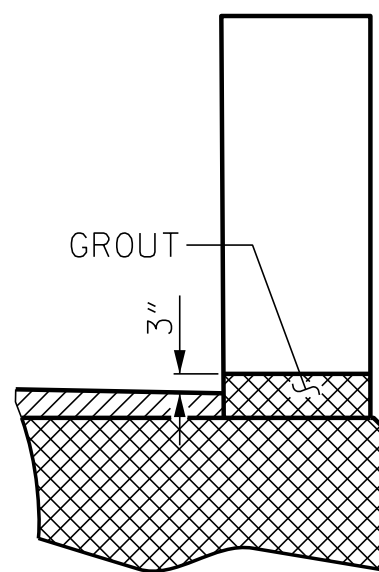
BAR TYPES



ALL BAR DIMENSIONS ARE OUT TO OUT

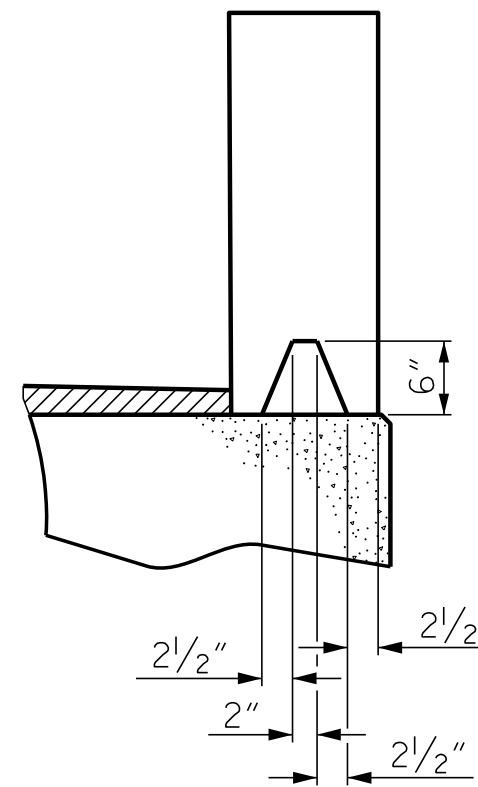
BILL OF MATERIAL FOR PARAPETS AND FOUR END POSTS

BAR	NO.	SIZE	TYPE	LENGTH	WEIGHT
* B9	16	#5	STR	29'-6"	492
* B10	64	#5	STR	10'-3"	684
* B25	96	#5	STR	14'-0"	1402
* E1	8	#7	STR	2'-9"	45
* E2	8	#7	STR	3'-3"	53
* E3	8	#7	STR	3'-9"	61
* E4	8	#7	STR	4'-3"	69
* E5	8	#7	STR	4'-8"	76
* F1	8	#6	STR	1'-10"	22
* F2	8	#6	STR	3'-0"	36
* F3	8	#6	STR	3'-4"	40
* S13	322	#5	1	5'-8"	1903
* EPOXY COATED REINFORCING STEEL				4883 LBS.	
CLASS AA CONCRETE				34.5 CU.YDS.	
TOTAL LIN FT. OF CONCRETE PARAPET				279.12 LIN.FT.	



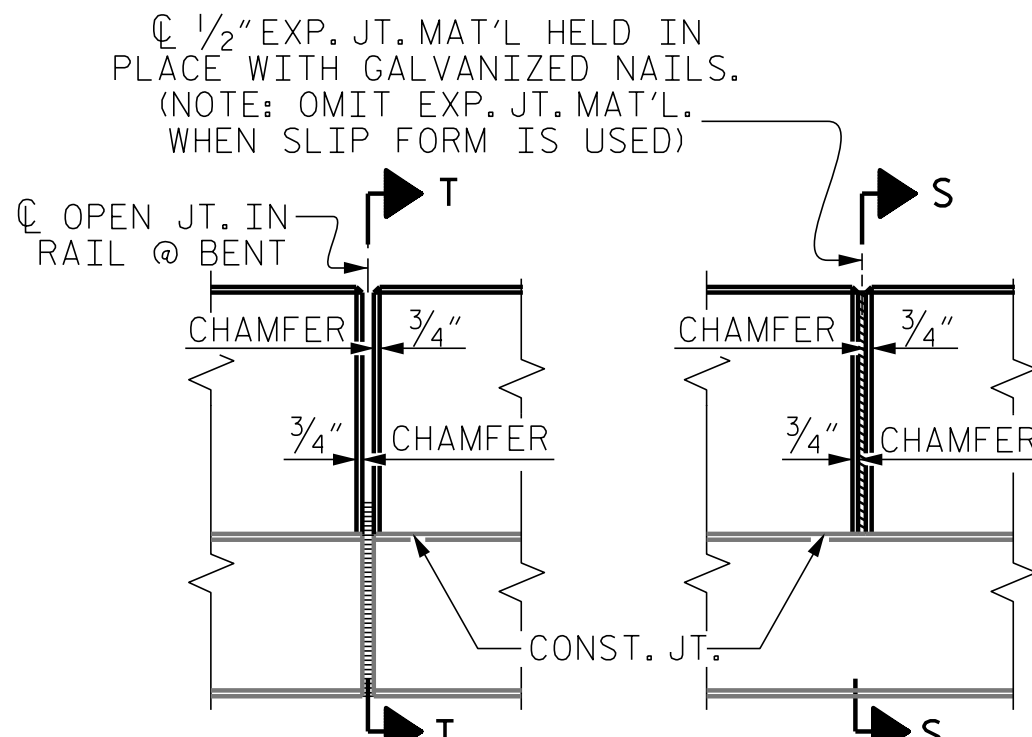
SECTION T-T

AT OPEN JOINT AT BENT
(THIS IS TO BE USED WHERE
FOAM JOINT IS NOT USED)

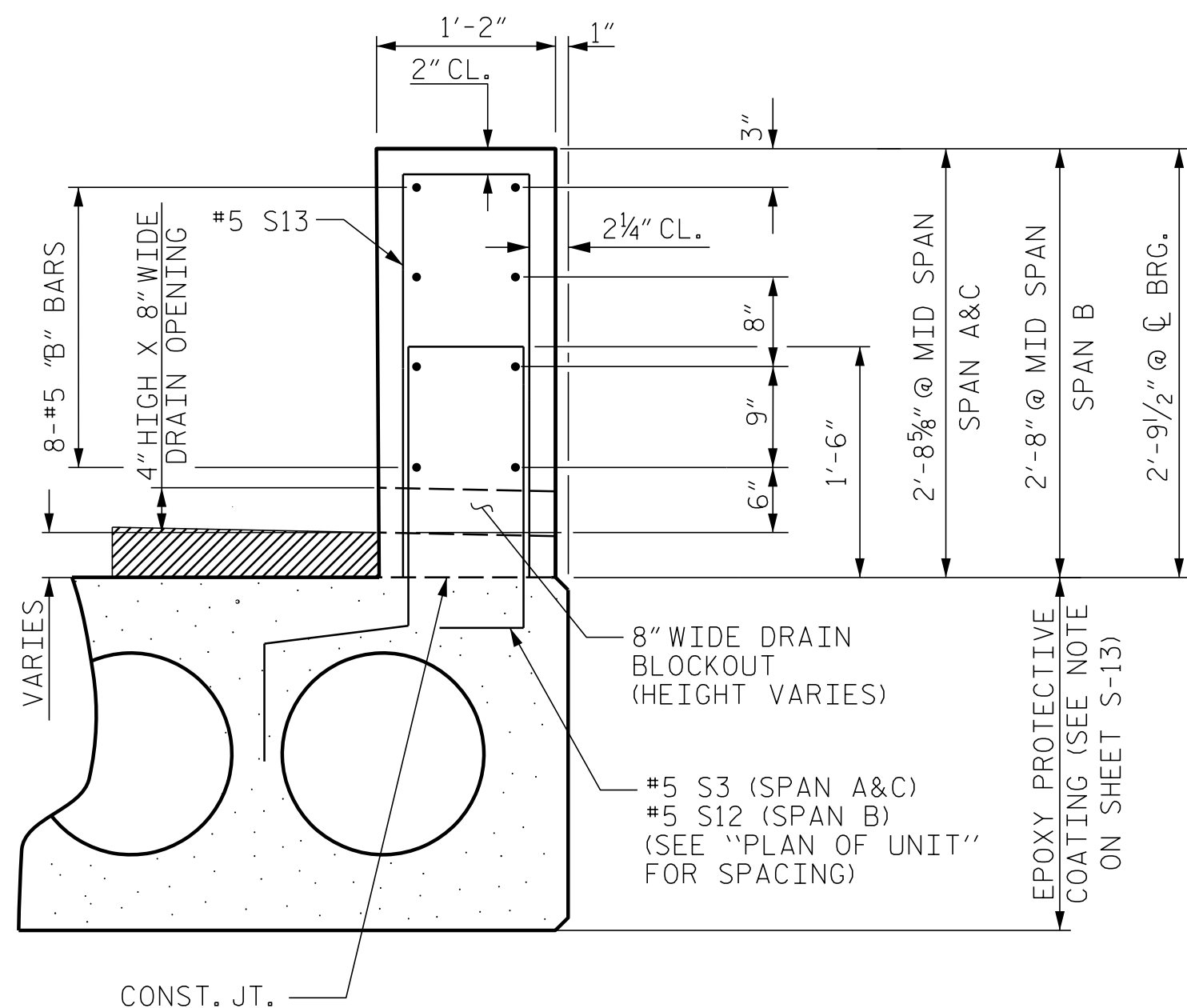


SECTION S-S

AT DAM IN OPEN JOINT
(THIS IS TO BE USED ONLY
WHEN SLIP FORM IS USED)



ELEVATION AT EXPANSION JOINTS



PARAPET SECTION

PROJECT NO. **BP14-R038**

POLK COUNTY

STATION: **13+52.50 -L1-**

SHEET 7 OF 7

STATE OF NORTH CAROLINA
DEPARTMENT OF TRANSPORTATION
RALEIGH

CONCRETE PARAPET
DETAILS

REVISIONS					SHEET NO.
NO.	BY:	DATE:	NO.	BY:	DATE:
1			3		
2			4		
TOTAL SHEETS					32

DOCUMENT NOT CONSIDERED
FINAL UNLESS ALL
SIGNATURES COMPLETED



VHB Engineering NC, P.C. (C-3705)
940 Main Campus Drive, Suite 500
Raleigh, NC 27606

DRAWN BY : **C.P. MALAGON** DATE : **08/2025**
CHECKED BY : **E.C. PHELPS** DATE : **08/2025**
DESIGN ENGINEER OF RECORD: **W.K. FISCHER** DATE : **09/2025**

10/22/2025
c:\bms\vhb-pw-01\d0248436\401.014-BP14-R038-CS02.dgn
ephelps

